

NOTES

WASTE DIMENSIONS ARE RELATED TO GRID LINES TO AID SETTING OUT.
 TO ALLOW FOR BUILDING TOLERANCES WASTE POSITIONS TO BE ADJUSTED, AS REQUIRED, TO ENSURE CLOSE AND NEAT PROXIMITY TO WALL FACES.

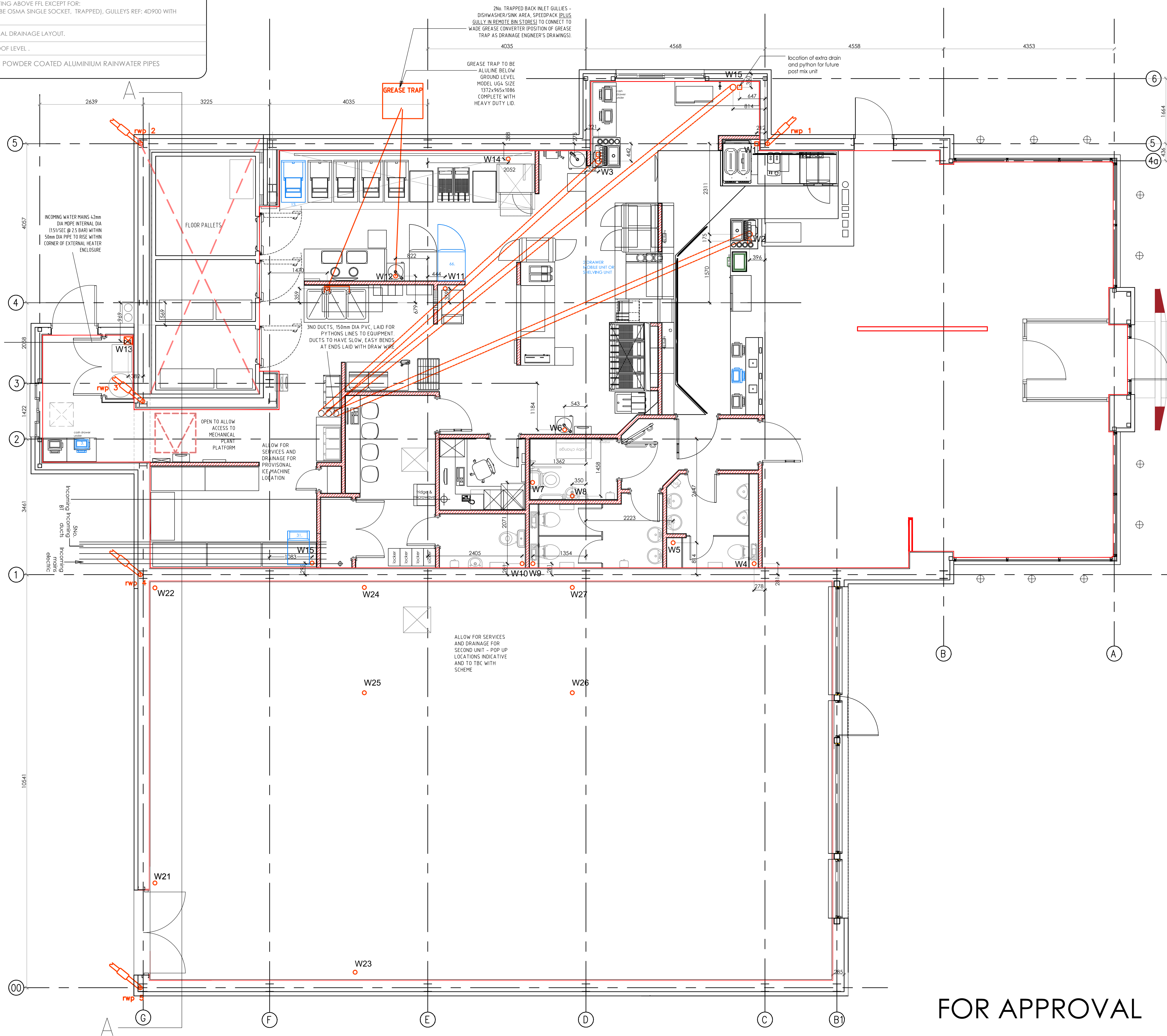
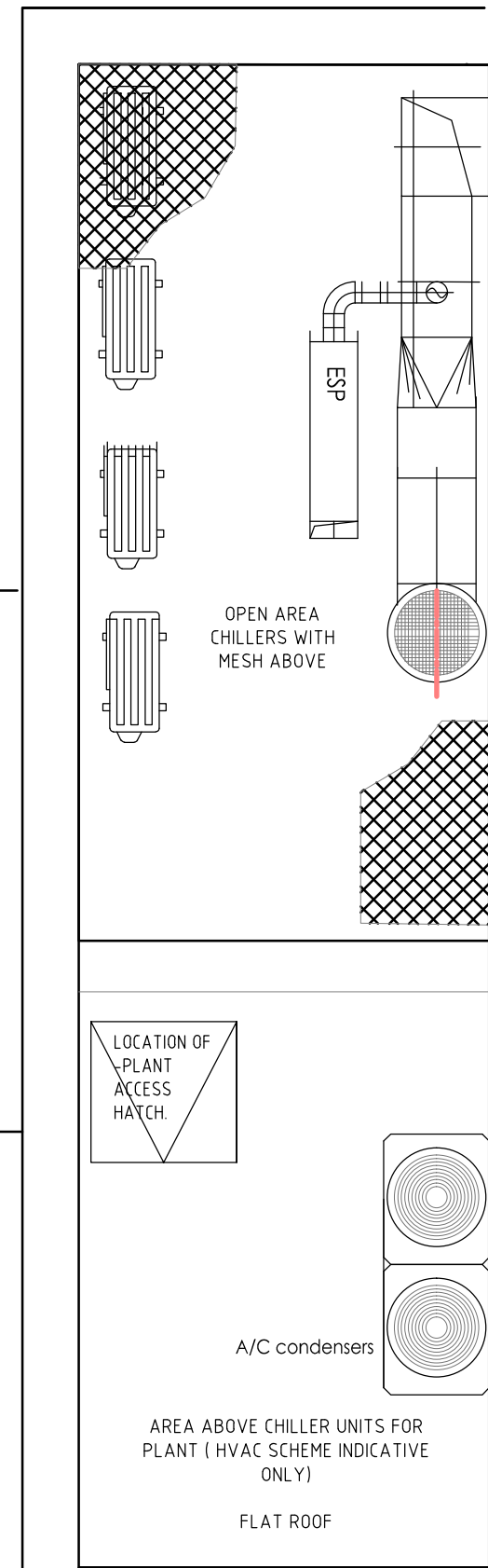
ALL CONNECTIONS TO BE 100mm, TERMINATING ABOVE FFL EXCEPT FOR:
 W1, W2, W3 W13 AND W15 WHICH ARE TO BE OSMO SINGLE SOCKET, TRAPPED), GULLEYS REF: 4D900 WITH SEALED COVER REF: 4D915

VENT PIPES TO BE INSTALLED TO SUITE EXTERNAL DRAINAGE LAYOUT.

W7 TO BE VENTED AND TAKEN UP ABOVE ROOF LEVEL.

ALL RAINWATER PIPES TO BE ALUMASC POWDER COATED ALUMINIUM RAINWATER PIPES 75mm DIA.

ALL DIMENSIONS TO BE CHECKED ON SITE.
 DO NOT SCALE FROM THIS DRAWING EXCEPT FOR THE PURPOSES OF LOCAL AUTHORITY PLANNING



rev	date	description
D	09.07.15	Layout revised in line with GA SK101 rev E. Revised to reduce the GIA of overall unit (NS)
C	21.09.15	Unit B layout slightly bigger. W21, W23 and rwp5 pushed. (MPO)
B	25.08.15	Equip outline layer updated following email comments from CE/BP 24-08-15 (NS)
A	23.08.15	Updated to scheme 5 with standard KFC layout (NS)

architect ltd

ripon house, suite 7
 35 station lane
 hornchurch
 essex, rm12 6jl
 tel: 01708 477899
 fax: 0709 223 4930
 e: office@architect.ltd.uk
 web: www.architect.ltd.uk

QFM

new build

store address
KFC DEANE VALLEY
 Gateway 36
 Deane Valley
 Barnsley

drawing title
Scheme 4
 Drainage plan
 15.0100

drawn by	checked	date
NS	@	Aug 15
store no.	scale	
0000	1:50 @ A1	

drawing no.	revision
0000/2015/SK5-109/15-0100	D

FOR APPROVAL