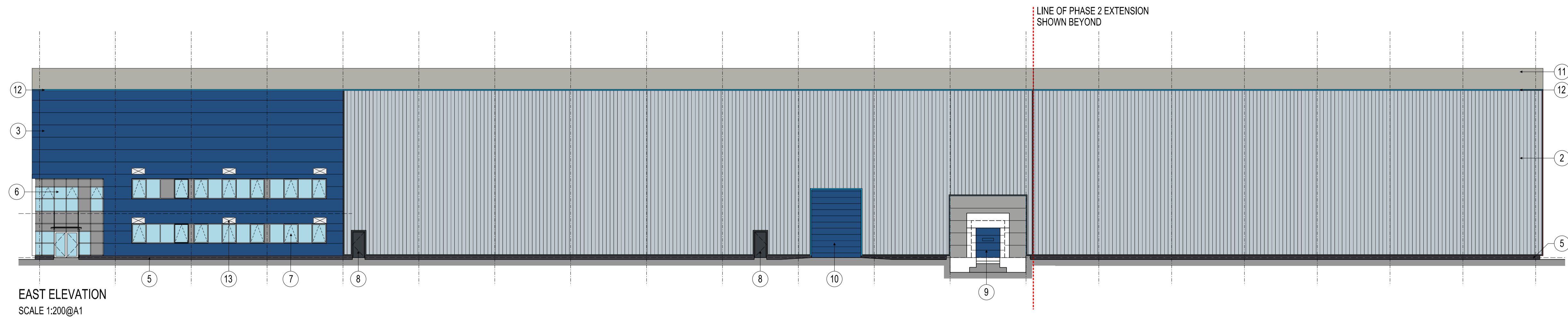


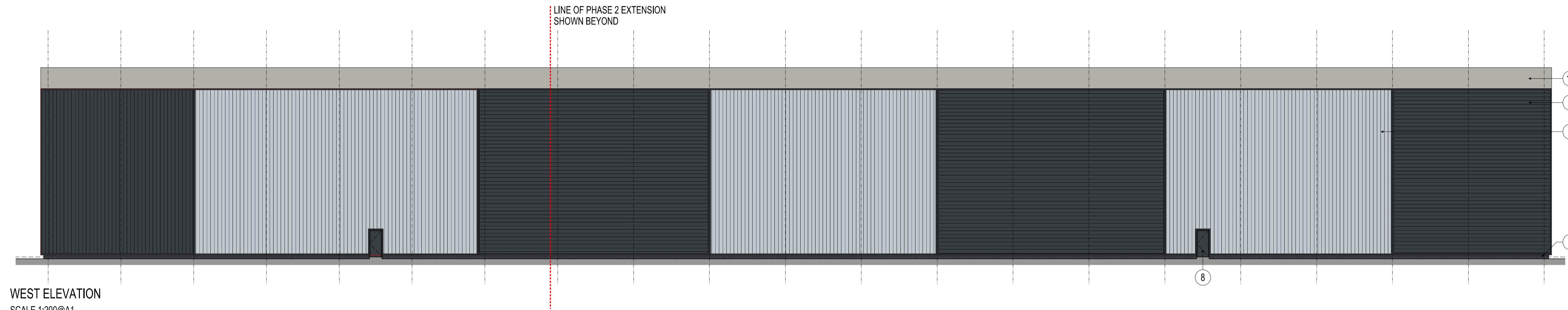
Notes:
 This drawing is the sole copyright of KPP Architects Ltd and reproduction in any form is forbidden unless permission is obtained in writing.
 Do not scale from this drawing. Any discrepancies on site should be brought to the attention of KPP Architects Ltd.
 Work and materials must comply with the current building regulations and codes of practice and be read in conjunction with building specifications and other sub-contractors information. All materials are to be installed in strict accordance with the recommendations of the manufacturers.

0m 2.5m 5m 10m

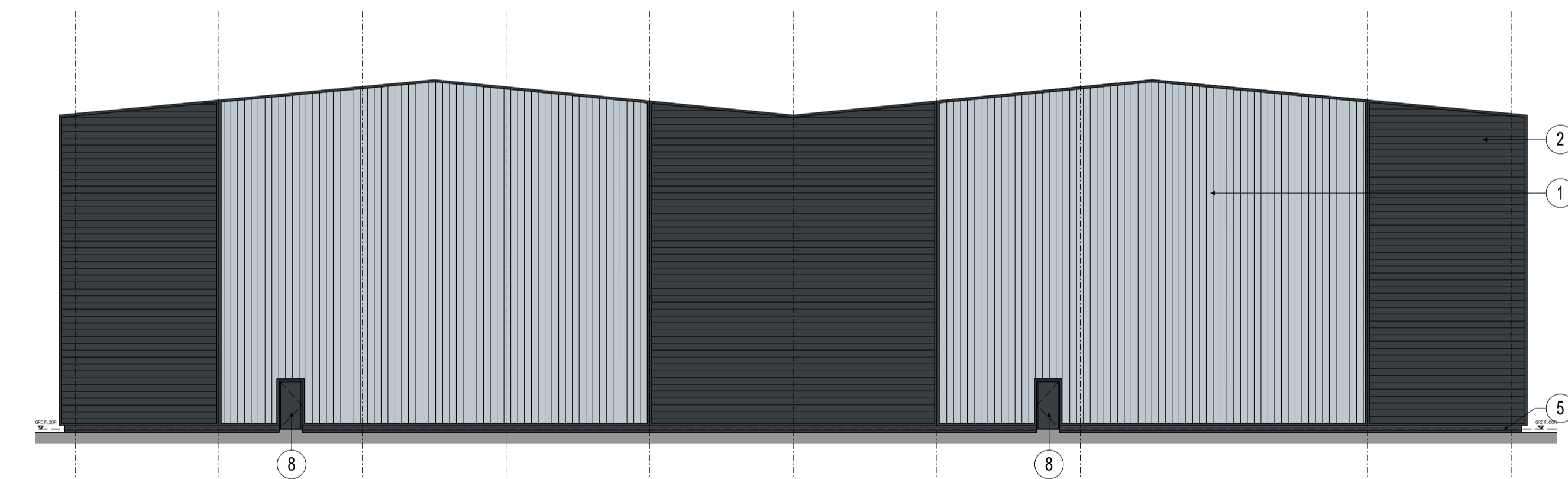
DENOTES EXTENT OF PHASE 2 EXTENSION



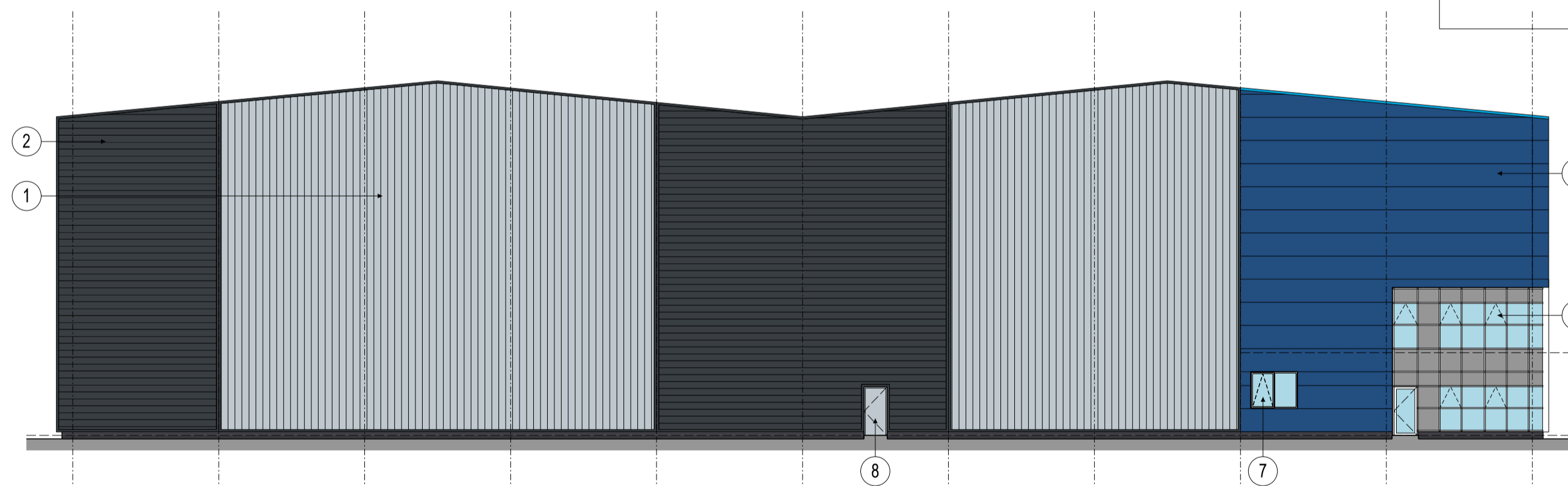
EAST ELEVATION
SCALE 1:200@A1



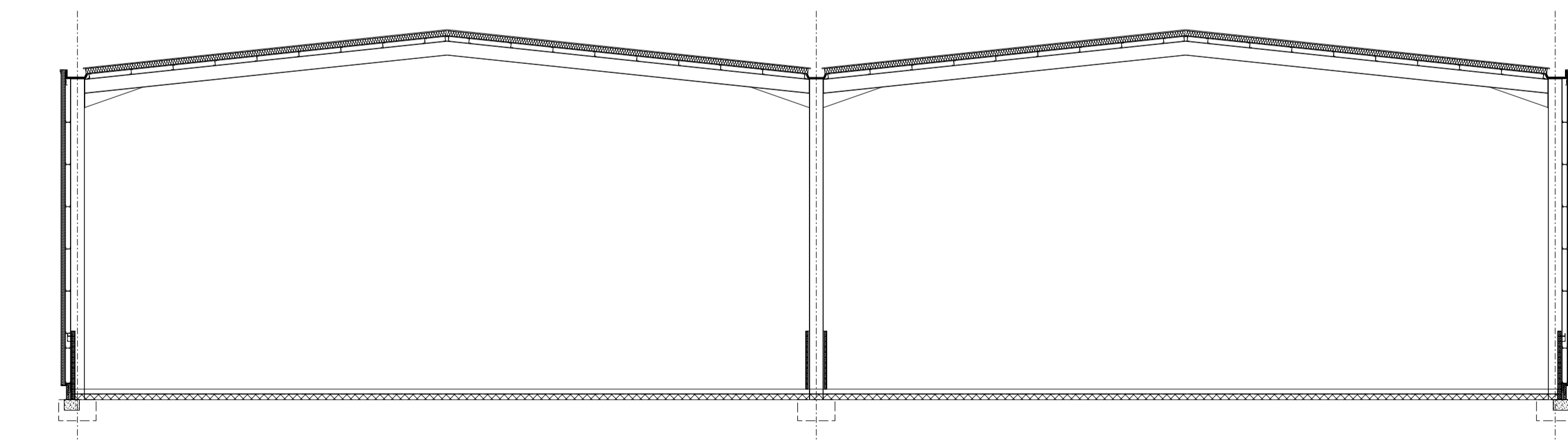
WEST ELEVATION
SCALE 1:200@A1



NORTH ELEVATION
SCALE 1:200@A1



SOUTH ELEVATION
SCALE 1:200@A1



TYPICAL SECTION
SCALE 1:200@A1

EXTERNAL MATERIAL SCHEDULE	
①	LIGHT GREY BUILT UP EXTERNAL CLADDING WITH DARK GREY TRIM
②	DARK GREY BUILT UP EXTERNAL CLADDING WITH DARK GREY TRIM
③	COMPOSITE INSULATED PANELS TO BE LIGHT GREY FOR FEATURE SIGNAGE PANEL & SAPPHIRE BLUE
④	LIGHT GREY COMPOSITE PANELS WITH CONCRETE DOCK WALL
⑤	BRICKWORK PLINTH
⑥	PPC ALUMINUM DG CURTAIN WALLS WITH LOOK ALIKE GLAZING
⑦	PPC ALUMINUM DG WINDOWS
⑧	PPC LIGHT GREY / DARK GREY STEEL DOOR SET
⑨	DOCK LEVEL DOOR, COLOUR BLUE
⑩	STEEL GOODS DOORS, COLOUR BLUE
⑪	PROFILED METAL ROOFING SHEETS, COLOUR GREY
⑫	CORNFLOWER BLUE FEATURE ALUMINIUM TRIM
⑬	PPC BLUE COLOUR MATCHED LOUVRES TO MATCH CLADDING

P2	ADDITIONAL WINDOW & DOOR ADDED	BC	JW	08.03.19
P1	CLADDING UPDATED TO FRONT ELEVATION	BC	JW	23.08.18

Rev	Description	By	Chkd	Date

Client

BARMSTON DEVELOPMENTS

Project Title:
**ENTERPRISE 36
 TANKERSLEY
 BARKSLEY**

UNIT 4 ELEVATIONS

KPP ARCHITECTS
 Lodge House
 12 Town Street
 Horsforth, Leeds LS184RJ
 T : +44 (0) 113 2390460
 E : architects@kpp-leeds.co.uk
 W : www.kpp-leeds.co.uk

Scale	Size	Date	Drawn	Checked
1:200	A1	AUG' 18	BC	.

Status

PLANNING

KPP Job No

1979

Rev

P2

Number

228

228