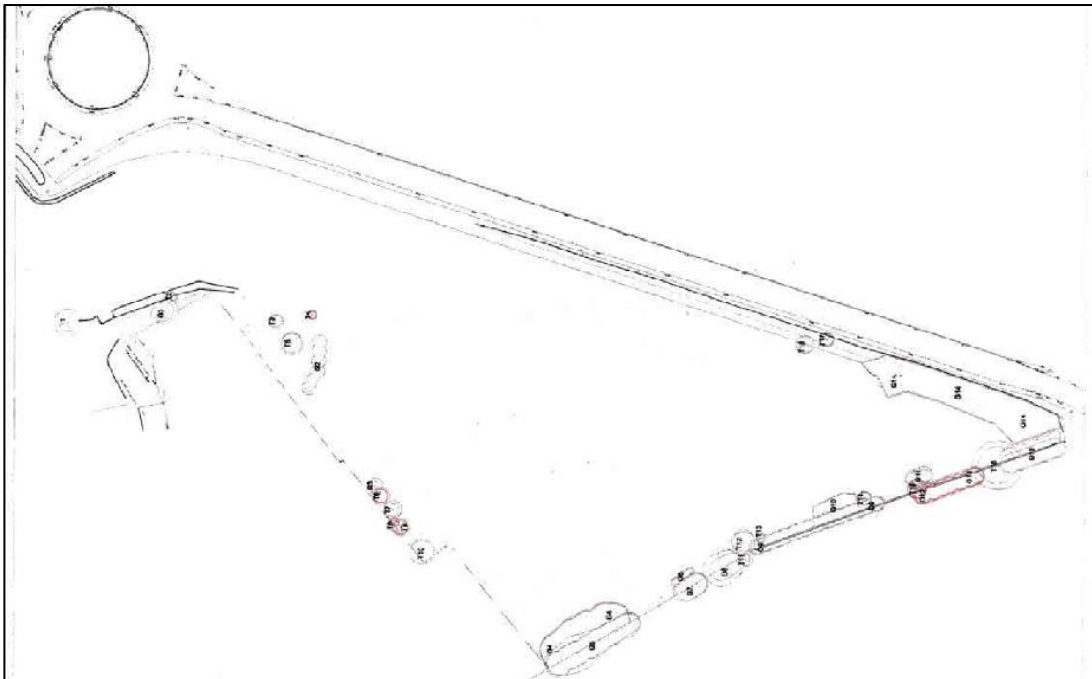




## The Kay Group Proposed Development of a PFS and Drive-Thru off Dearne Valley Parkway, Birdwell, Barnsley

### Condition 17 – Tree Protection

As extracted from the outline submission of the “Arboriculture Constraints Appraisal” to the whole estate, this proposed development area of the estate has no trees to protect.



The PFS and Coffee Drive-Thru development stops on the pavement boundary

